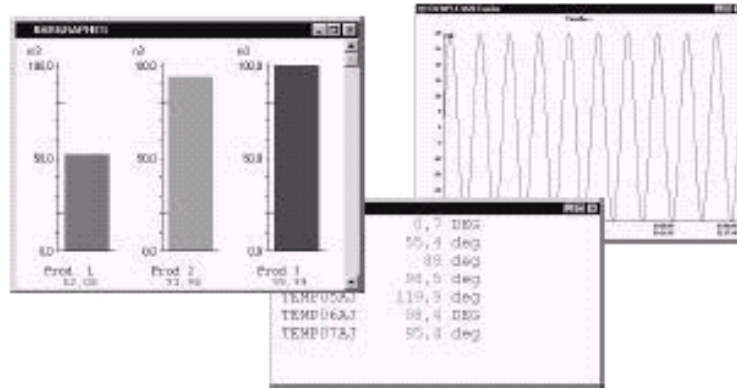


DATA ACQUISITION

Software for configuration and graphical supervisory on PC



AOIP offers a large range of data acquisition systems from the single channel measurement (display panel meter and transmitter) to the system able to manage several hundreds channels. Each product is proposed with a large range of software which allow configuration, creation of results files, and display of measurements in real time thanks to a monitoring system open to every systems working under protocol MODBUS/RTU.

- for all instrument MODBUS/RTU
- network use
- link to spreadsheet
- easy use
- remote monitoring

Software list

Functions	P/N Software	Transmitter		Indicator			Acquisition Systems	
		TRN	ITI	1 to 11 channels DIGITI – SA 10	1 to 32 channels SA 32	1 à 2000 channels DATALOG	All MODBUS/RTU instrument	
Programming + storage under DOS	LS 10			•				
Programming under WINDOWS	LTCTM	•	•					
Programming + storage under WINDOWS	LTC32W LOGIDAT				•			
Real time graphs and remote monitoring under DOS	LS 23			•	•	•		
Automatic software of call under Windows	LTCMP				•	•		
Supervisor under WINDOWS	LWTM	•	•					
Supervisor under WINDOWS and 16 bits network operating	LW1	•	•	•	•	•	•	
Supervisor under WINDOWS and 32 bits network operating	VISULOG	•	•	•	•	•	•	
DLL Library	LTC001	•		•	•	•		
Driver LABVIEW	LTC003	•		•	•	•		

DATA ACQUISITION

Graphical supervision under Windows

VISULOG, LW1, LWTM.....

They are real time supervision software working under Windows environment from 3.1 to NT.

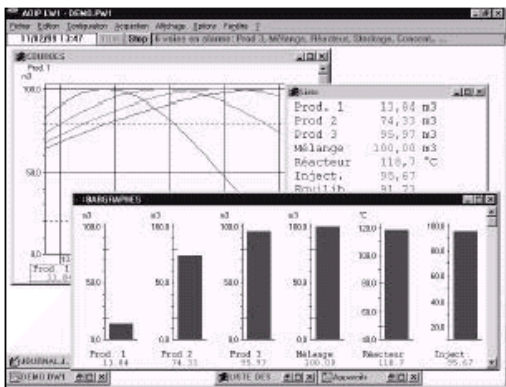
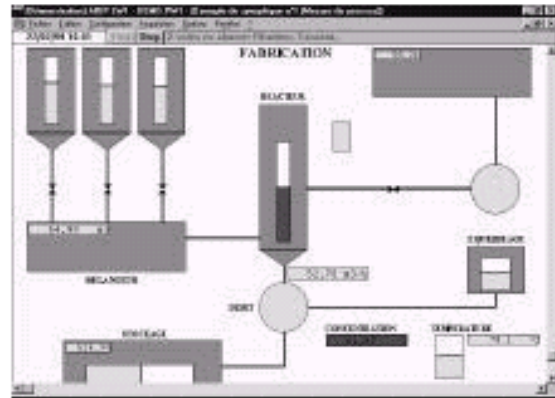
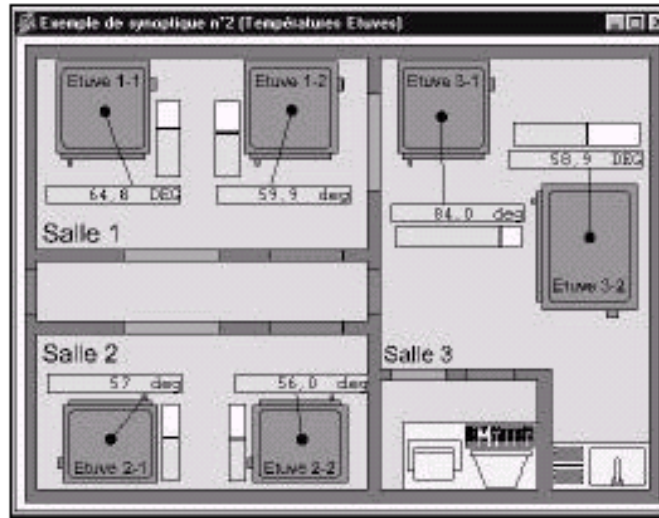
They permit acquisition of 500 to 2000 measurement channels which come from 1 to 100 MODBUS compatible instruments.

The user can define any mathematical and statistical calculation types on channels and between channels, and also order emission toward outputs.

Real time visualisation of results is carried out in the display windows created by the user. Each window may contain representation in the form of synoptic, curves, bargraphs, numerical tables and also alarms listing.

The user can also define result files, that may be displayed without stopping the acquisition and exported toward Excel.

The different software offer DDE links and may be installed in network.



Programming and storage

LS 10 – LTCTM – LTC32W – LOGIDAT.....

For each acquisition system, AOIP proposes an associated software allowing programming from a PC. These utilities are presented as scrolling menus, the different choices being guided by questions / answers.

This software also allows the transfer from memory system to PC or the result file creation on the calculator storage unit.

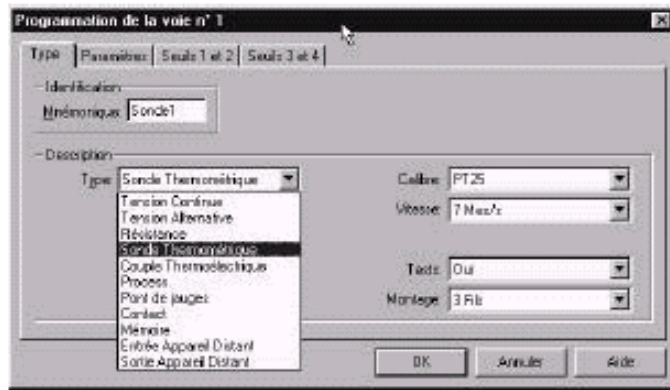
The files created are in binary code, 6 bytes for one measurement. Different sorting possibilities are offered (channel extraction, marker positioning, ...). An off line exploitation function allows to recreate virtual channels authorising any calculations on channels and between channels. The files created can be converted in ACSII code, with field separator definition, for their exportation into usual spreadsheet (Excel, ...).

These software offer to the user graphical utilities allowing channel representation in forms of curves with the following functionalities:

- 2 Y-coordinate choices,
- 30 channels at the same time drawing,
- X-coordinate choice (time or measurement),
- Possibility of title and remarks recording before printing,
- Zoom and marker functions,
- Graphical output on printer.

DATA ACQUISITION

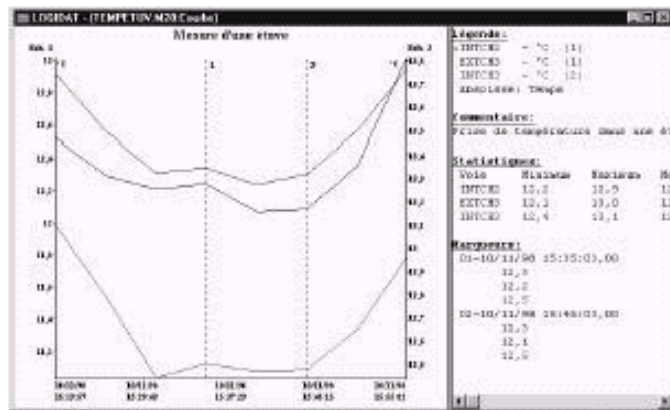
LOGIDAT – LTC32W : programming screen
Full guided menu allows the user to choose the sensor type, to program possible conversion laws, alarm thresholds and their actions on the relay outputs.



LOGIDAT – LTC32W : Graphical exploitation screen

They allow the stored information transfer from the system memory to the calculator, data being safeguarded in a file. The user has access to a graphical representation in form of curves, and this up to 30 channels. Options are accessible such as:

- 2 different Y-coordinates programming
- Choose of X-coordinate : time or measurement channel (XY correlation)
- Title or comment definition
- Marker and zoom functions
- Off-line calculations on channels or between channels.



Utilities

A utility pack comes to complete the described products.

DLL library – LTC001.....
LTC001 software, usable with SA32, Datalog systems, places at the user disposal a under Windows executable DLL library offering the following functionalities:

- Call of a configuration and loading into the acquisition system,
- Measurement request of one or several channels,
- Output channel positioning

Labview driver – LTC003.....
Allows the use in Labview environment of the AOIP acquisition systems without a specific development for the dialog.

Multipoints software – LTCMP.....
This utility allows the asking and the automatic creation of result files when several acquisition systems are used. The connection with systems should use RS 485 or modem with different call numbers.

Majority of the software above is able to dialog with the acquisition systems via modems, programming and transfer data information forwarding by the telephone network.

Instruction to order

Transmitters and panel meters configuration software
Supervision software for transmitters
Programming and storage software for DATALOG
16 bits supervision software for acquisition systems
32 bits supervision software for acquisition systems
Programming and storage software for SA32
Programming and storage software for DIGIT1 and SA10
Real time and monitoring software under DOS
DLL library
Labview driver

LTCTM
LWTM
LOGIDAT
LW1
VISULOG
LTC32W
LOGIDAT
LS23
LTC001
LTC003



AOIP
BP 182
91006 EVRY CEDEX France
+33 1 69 36 50 60
www.aqip.com

